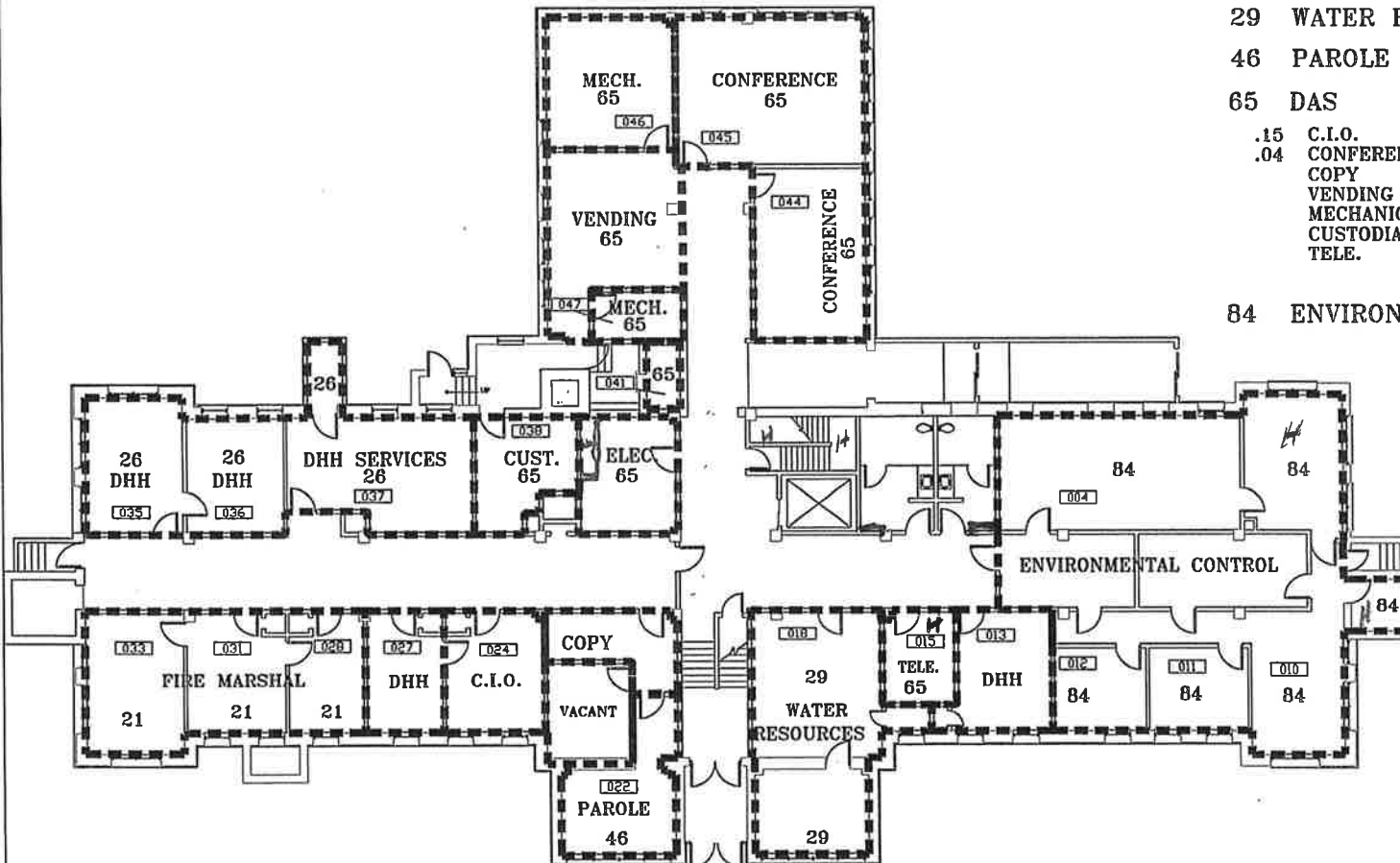


5758 Z1
ATTACHMENT B 1 OF 4

NPOBLL.DWG

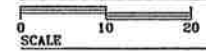
AGENCY	AREA
21 FIRE MARSHAL	553
26 DHH SERVICES	1,058
29 WATER RESOURCES	481
46 PAROLE ADMIN.	201
65 DAS	2,146
.15 C.I.O.	187
.04 CONFERENCE	724
COPY	125
VENDING	318
MECHANICAL/ELEC	533
CUSTODIAL	155
TELE.	106
84 ENVIRON. CONTR.	1,665



*H = Hard Surfaces
All other space is
Carpet Tiles*

CRAFT STATE OFFICE BLDG. #1
NORTH PLATTE

LOWER LEVEL PLAN



SEPTEMBER 2008

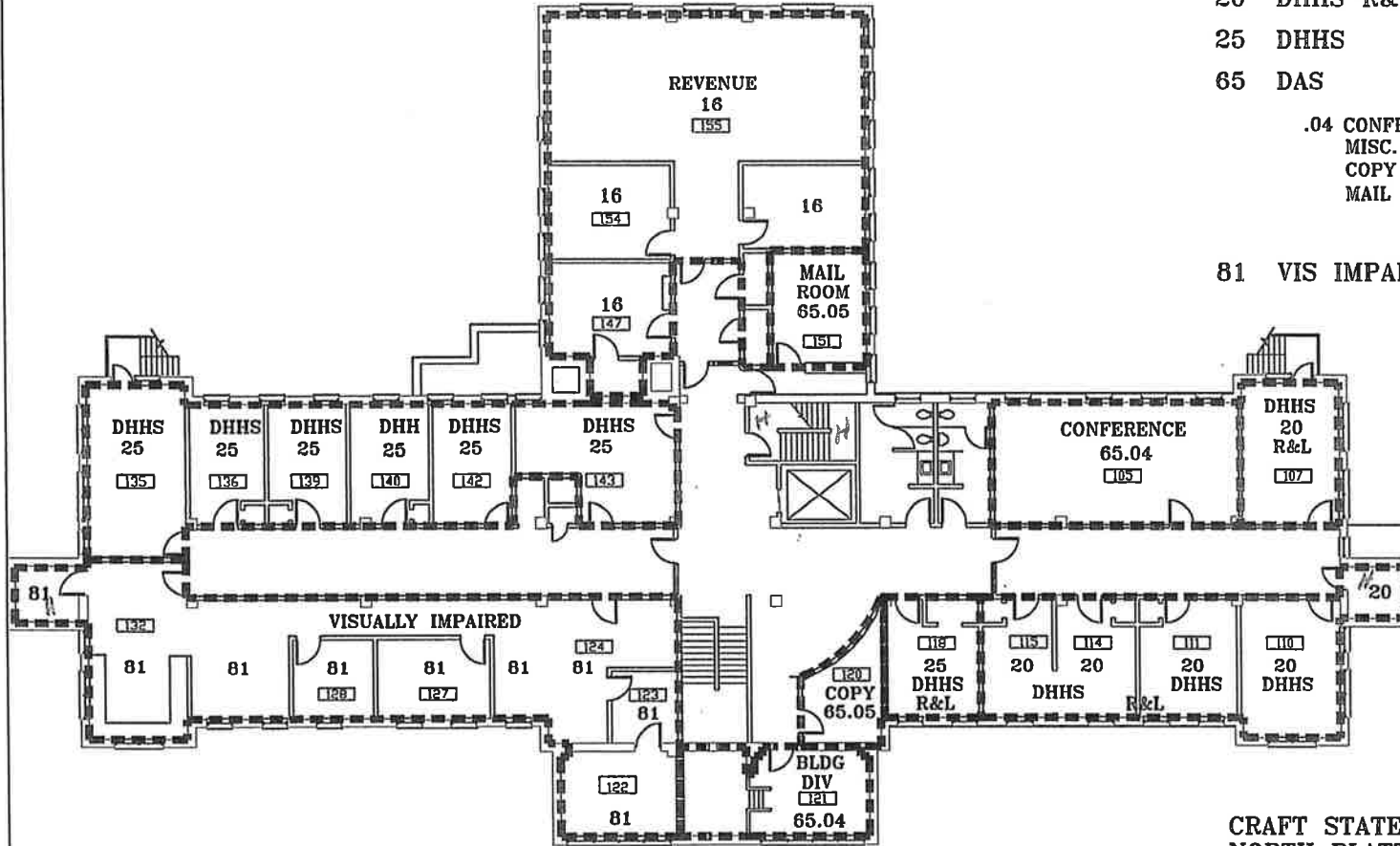
5758 Z1
 ATTACHMENT B 2 OF 4

NPOB1.DWG

AGENCY AREA

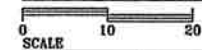
16	REVENUE	1,427
20	DHHS R&L	961
25	DHHS	1,299
65	DAS	1,013
.04	CONFERENCE	461
	MISC.	253
	COPY	128
	MAIL	171

81 VIS IMPAIRED 1,474



CRAFT STATE OFFICE BLDG. #1
 NORTH PLATTE

FIRST FLOOR PLAN

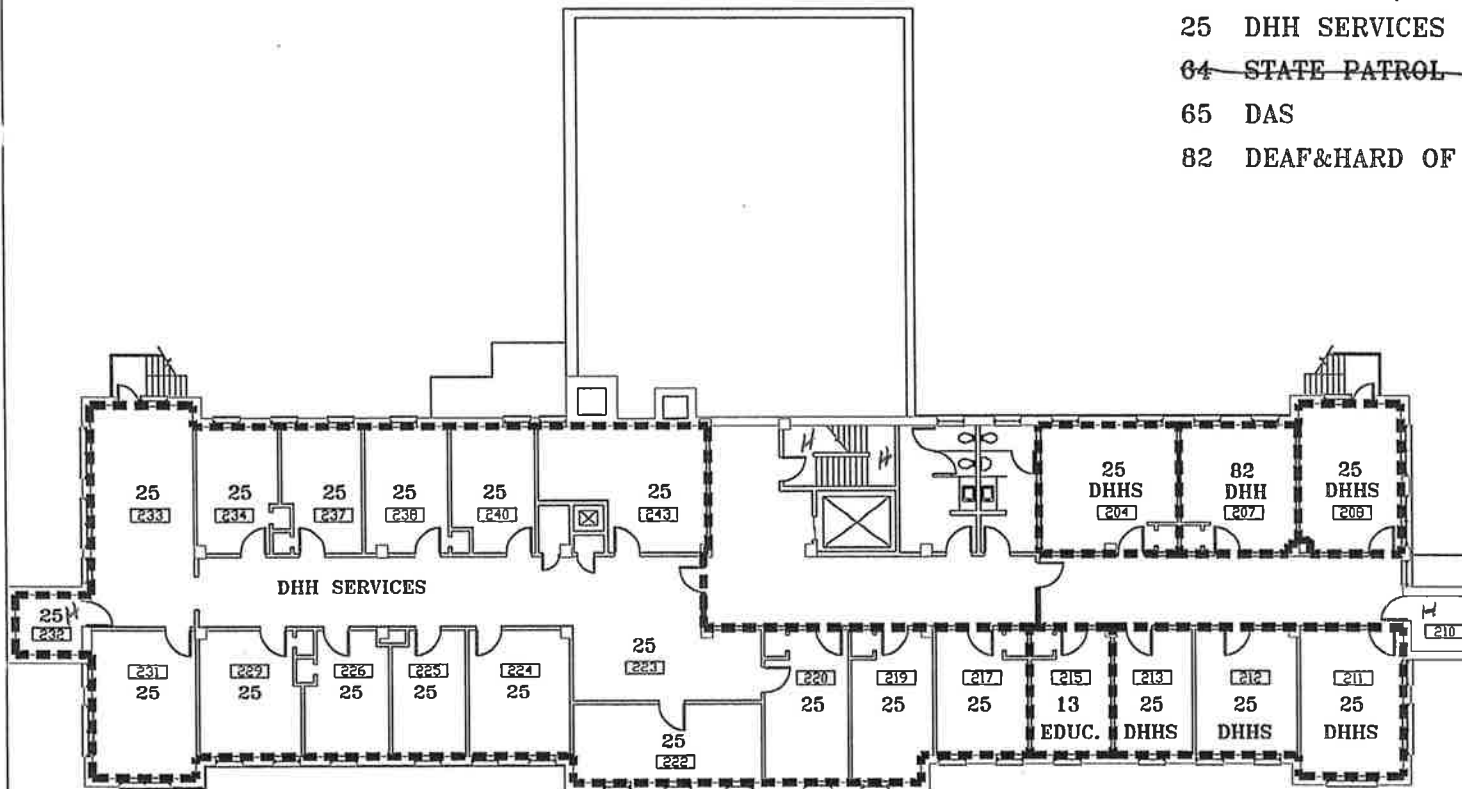


SEPTEMBER 2003

5758 Z1
ATTACHMENT B 3 OF 4

NPOB2.DWG

AGENCY	AREA
13 EDUCATION/NUTR.SER.	147
25 DHH SERVICES	3,862
64 STATE PATROL	218
65 DAS	249
82 DEAF&HARD OF HEARING	210



CRAFT STATE OFFICE BLDG. #1
NORTH PLATTE

SECOND FLOOR PLAN

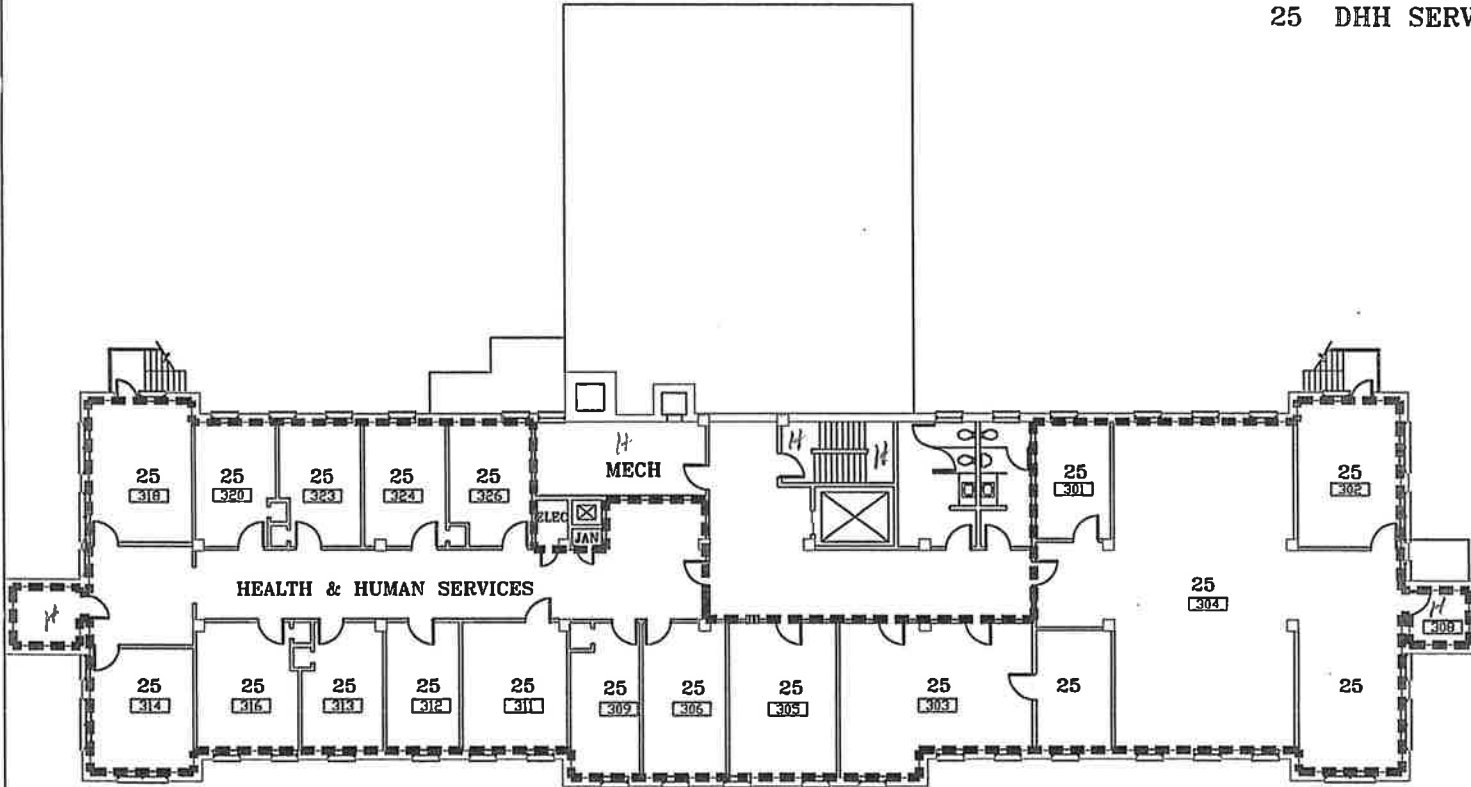
SCALE 0 10 20

SEPTEMBER 2008

NPOB3.DWG

AGENCY	AREA
--------	------

25 DHH SERVICES	5,218
-----------------	-------



CRAFT STATE OFFICE BLDG. #1
NORTH PLATTE

THIRD FLOOR PLAN

0 10 20
SCALE

SEPTEMBER 2008